



“my  
Reference.”

SAGA<sup>2</sup> Connect

SAGA<sup>2</sup>

**Gerflor**<sup>®</sup>  
theflooringgroup



**Interlocking installation  
with dovetails**  
*Assemblage grâce  
aux queues d'aronde*



**Adhesive free**  
*Pas d'adhésif*



**Fast and easy  
renovation**  
*Rénovation rapide et facile*



**All over effect**  
*Décor avec effet continu*

A woman with long dark hair, wearing a white jacket and black pants, is walking away from the camera in a modern, brightly lit hallway. She is pulling a black rolling suitcase. The hallway has large windows on the left and a large, spherical, textured light fixture hanging from the ceiling. The floor is covered in a dark, textured carpet.

**SAGA<sup>2</sup> Connect**



Installation  
with tackyfier  
*Adhésif repositionnable*



Comfort & Resistance  
*Envers liège :  
confort et résistance*



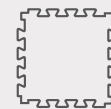
<65dB  
-15dB  
Acoustic  
*Confort acoustique*



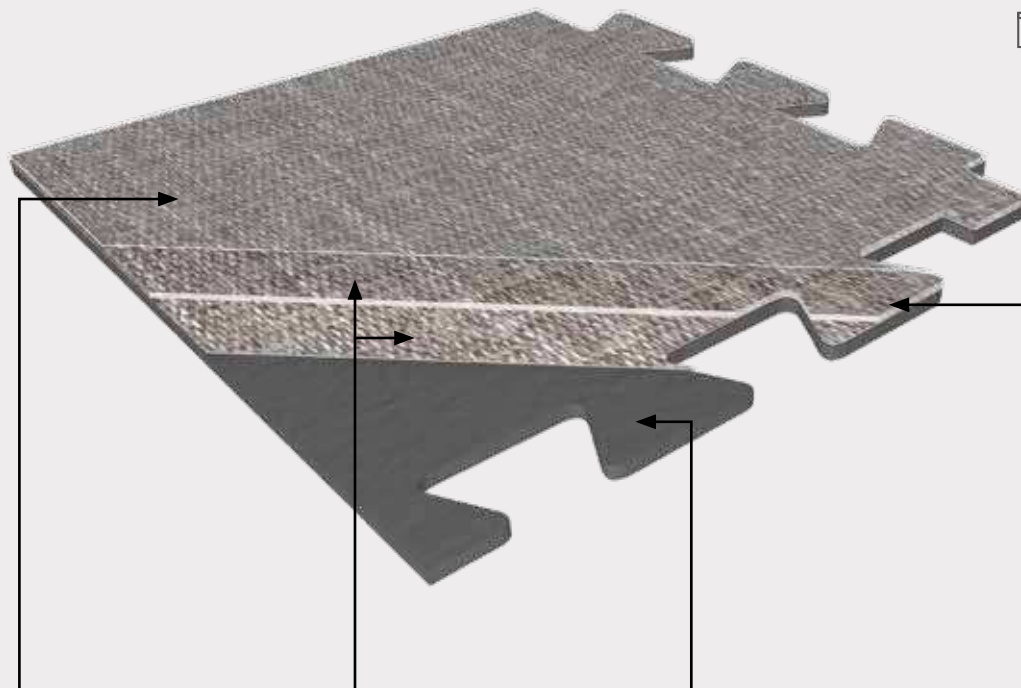
90° installation  
*Pose à 90°*

**SAGA<sup>2</sup>**

# SAGA<sup>2</sup> Connect



701.3 x 701.3 mm



## PROTECSOL®



Easy maintenance  
Facilité d'entretien

## 4D DESIGN

STRUCTURED EMBOSSED  
GRAINAGE STRUCTURÉ



Ultra realistic surface  
Décor ultra réaliste

MATT SURFACE  
SURFACE MATE



Natural look

CRYSTAL WEAR LAYER  
COUCHE D'USURE CRISTAL

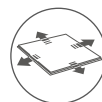


High definition design  
& color  
Décor haute définition

DESIGNS  
DÉCORS

Designs selected to hide  
dovetails - all over effect  
Décors masquant  
les queues d'aronde

## RESILIENT REINFORCED CORE



Glass particles  
for better stability  
Fibres de verre  
► stabilité dimensionnelle



Noise absorption  
Sonorité à la marche  
améliorée



Soft underfoot  
Confort à la marche



Renovation ceramic  
5 mm joint  
Pose sur carrelage  
si joint < 5mm

## EXCLUSIVE DOVETAILS QUEUES D'ARONDE



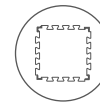
Gerflor patented  
Brevet Gerflor



No adhesive  
Pas d'adhésif



Easy installation  
Pose facile



Avoid mistakes  
installation  
Limite les erreurs de pose

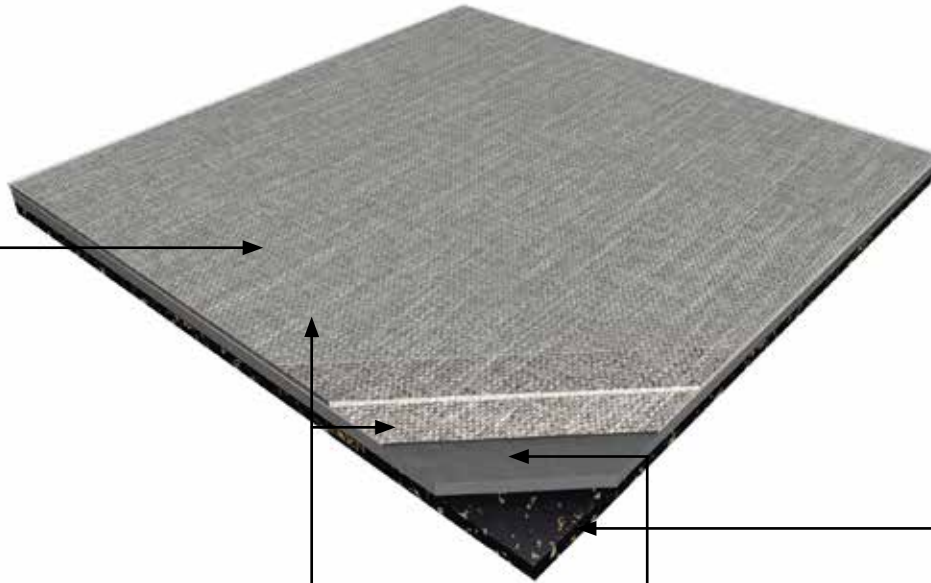
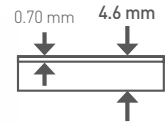


Resistant dovetails  
Queues d'aronde  
résistantes

# SAGA<sup>2</sup>



500 x 500 mm



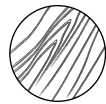
## PROTECSOL<sup>®</sup>



Easy maintenance  
Facilité d'entretien

## 4D DESIGN

STRUCTURED EMBOSSED  
GRAINAGE STRUCTURÉ



Ultra realistic surface  
Décor ultra réaliste

MATT SURFACE  
SURFACE MATE



Natural look

CRYSTAL WEAR LAYER  
COUCHE D'USURE CRISTAL



High definition design  
& color  
Décor haute définition

DESIGNS  
DÉCORS

Exclusive designs  
Décors exclusifs

## RESILIENT CORE



Noise absorption  
Sonorité à la marche  
améliorée



Soft underfoot  
Confort à la marche



Renovation ceramic  
5 mm joint  
Pose sur carrelage  
si joint < 5mm

## CORK BACKING ENVERS LIÈGE



15 dB  
Impact Sound Insulation  
Isolation acoustique  
bruits de choc

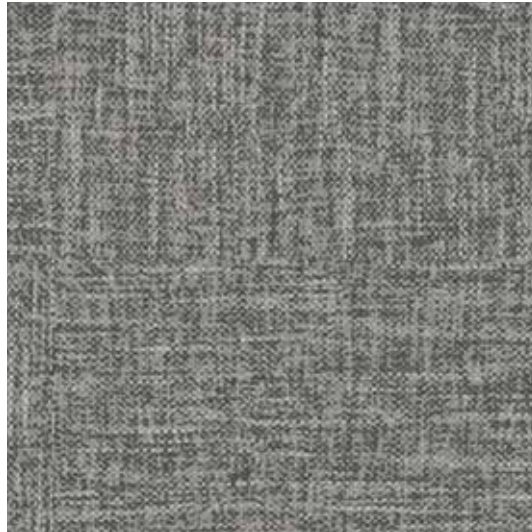


Environmental friendly  
Un choix éco-responsable



Easily removable  
Conception plombante  
repositionnable

# SAGA<sup>2</sup>

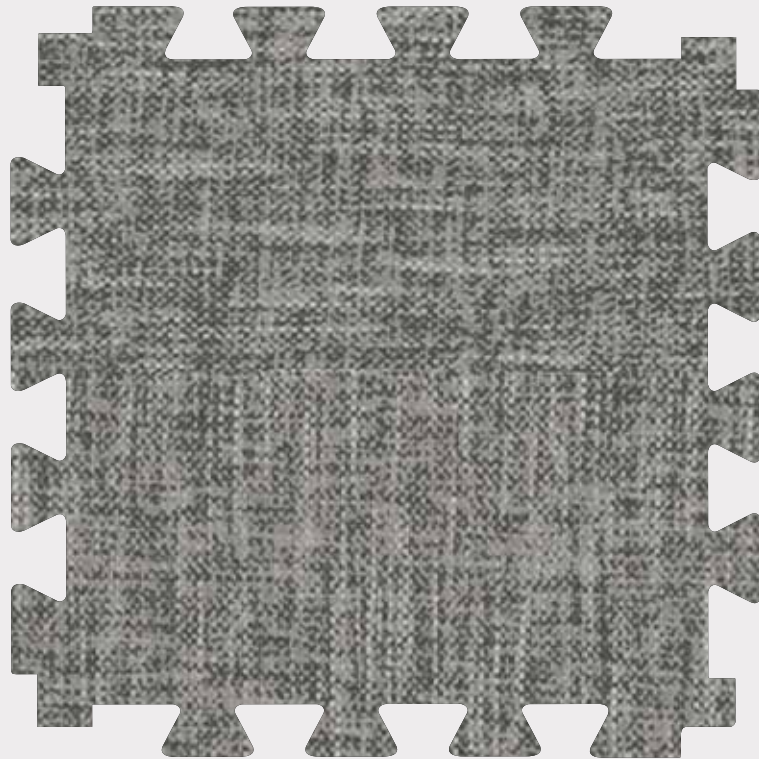


0089 Gentleman Taupe



500x500mm

# SAGA<sup>2</sup> Connect

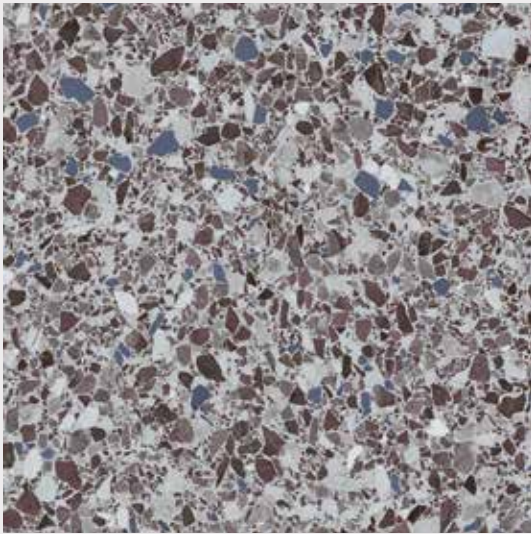


0089 Gentleman Taupe

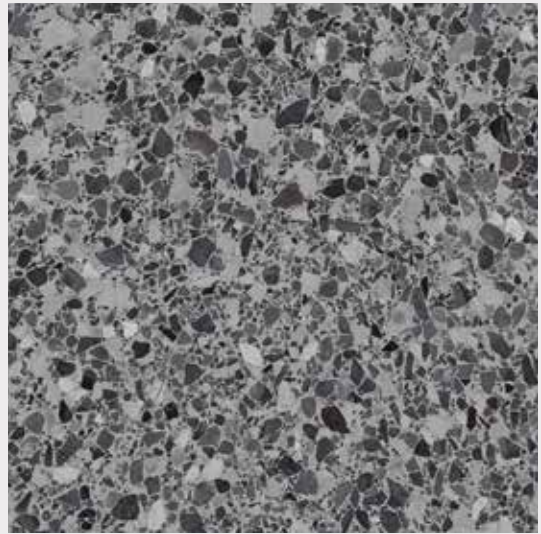


701.3x701.3mm

# SAGA<sup>2</sup> / SAGA<sup>2</sup> Connect



1089 Dalma Burgundy



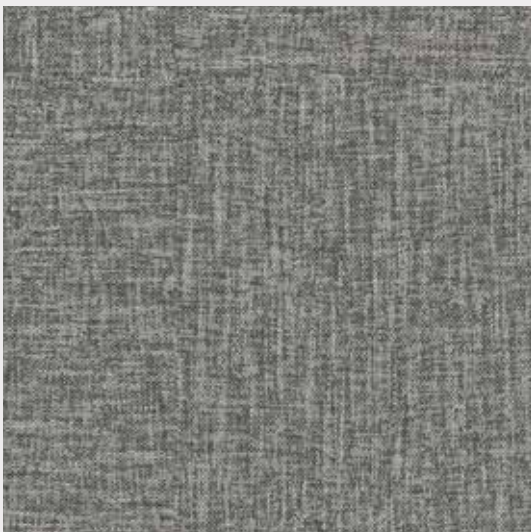
1088 Dalma Grey



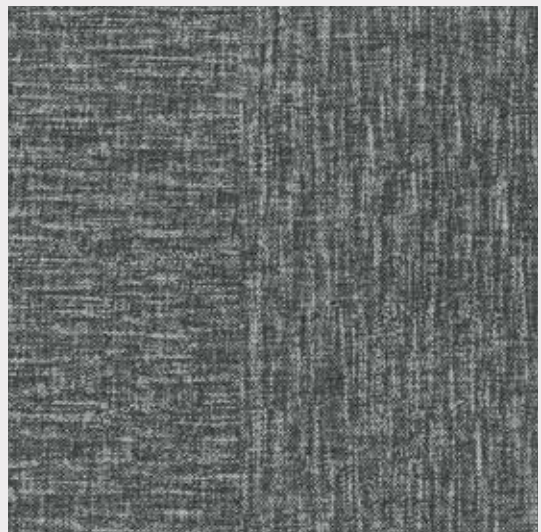
0062 Rough Textile Beige



0063 Rough Textile Grey



0089 Gentleman Taupe



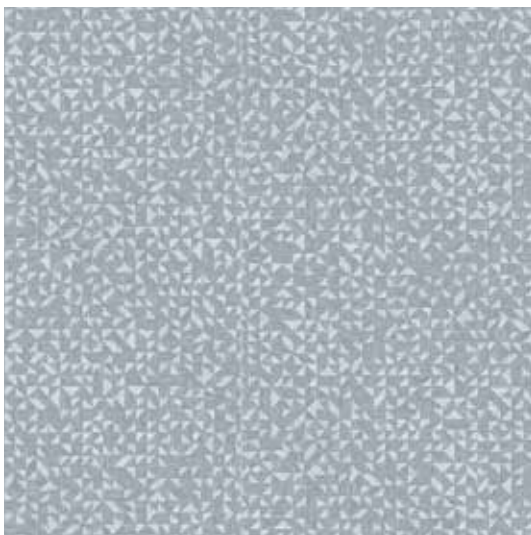
0088 Gentleman Grey



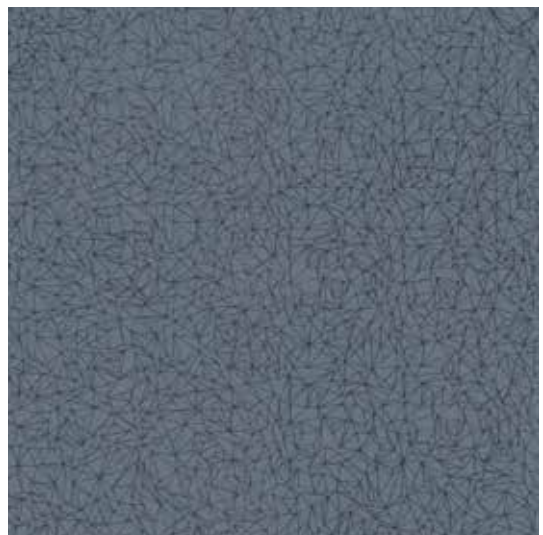
# SAGA<sup>2</sup>



0028 Fiber Silver



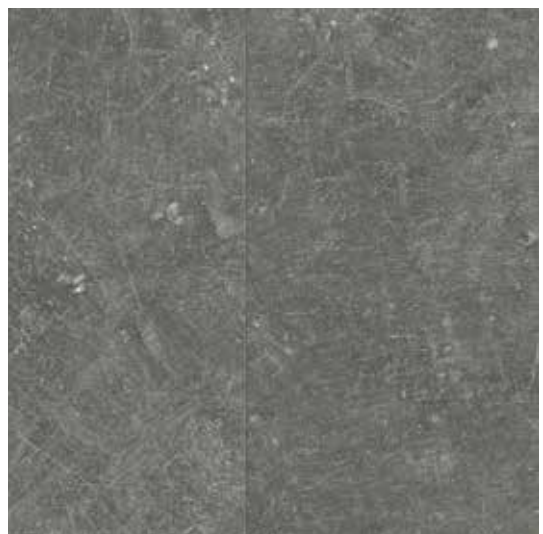
0032 Mozaic Grey



0039 Spider Blue



0021 Barma Sweet



0085 Dock Grey





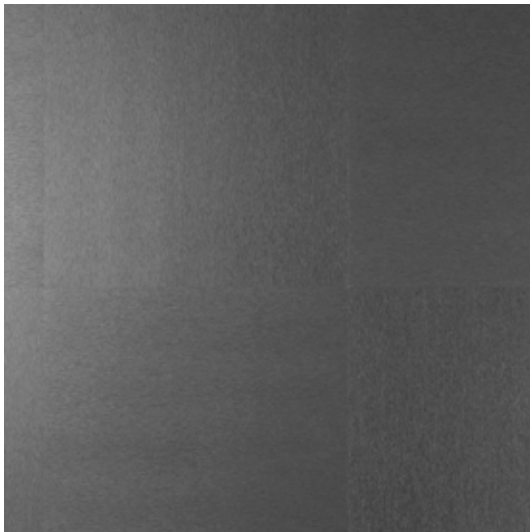
# SAGA<sup>2</sup>



0030 Gentleman Blue



0017 Kadina City



0027 Fiber Heavy Metal



0023 Barma Mystery



# SAGA<sup>2</sup>



0087 Dock Taupe



0029 Gentleman Beige



0572 Amarante Dark



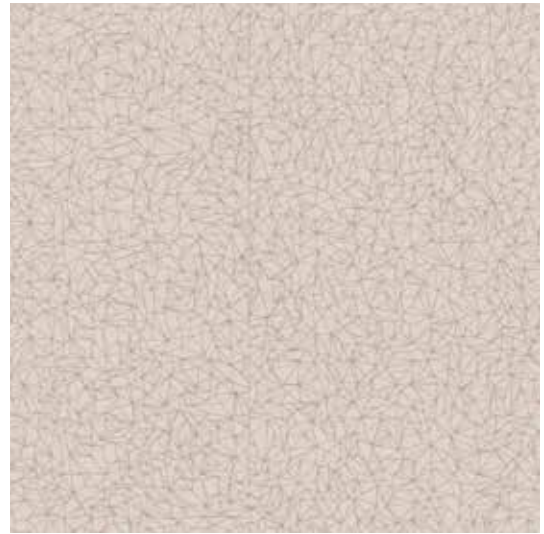
0579 Amarante



# SAGA<sup>2</sup>



0025 Barma Beige



0033 Spider Beige



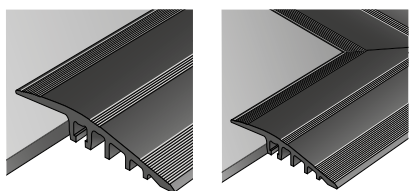
0577 Albion



0026 Fiber Copper

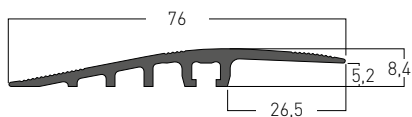


## PROFILES PROFILÉS



0505

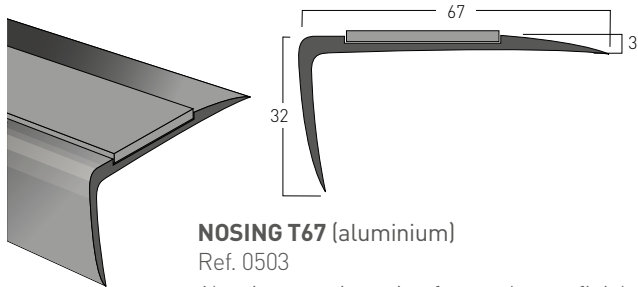
1513



**RAMP 5-6MM**  
(aluminium)  
Ref. 0505



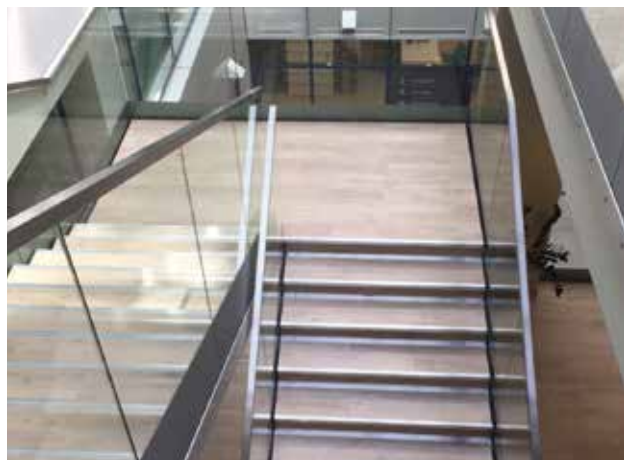
## STAIRNOSING SOLUTION NEZ DE MARCHE



**NOSING T67** (aluminium)  
Ref. 0503

Aluminum stair nosing for an elegant finish to steps while increasing safety with its non-slip strip.

*Nez de marche aluminium pour une harmonie palier/marche. Action anti-dérapante pour plus de sécurité.*



## ENTRANCE MATS TAPIS D'ENTRÉE

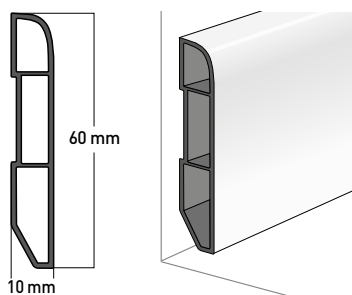


**QUICK MAT\***  
Ref. 8550



**LOOSELAY ROMAT GT INSERT KIT**  
Ref. 1719

## SKIRTINGS PLINTHES



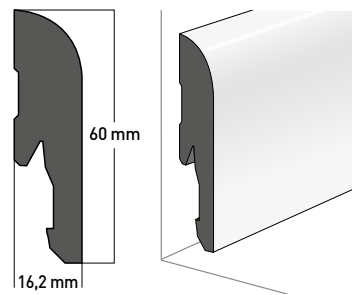
Ref. 6086 S001

### VINYL WHITE SKIRTING

- Water resistant
- Can be adhesived
- Can be painted over

### PLINTHE PVC BLANCHE

- Résistante à l'eau
- Peut être adhésivée
- Peut être peinte



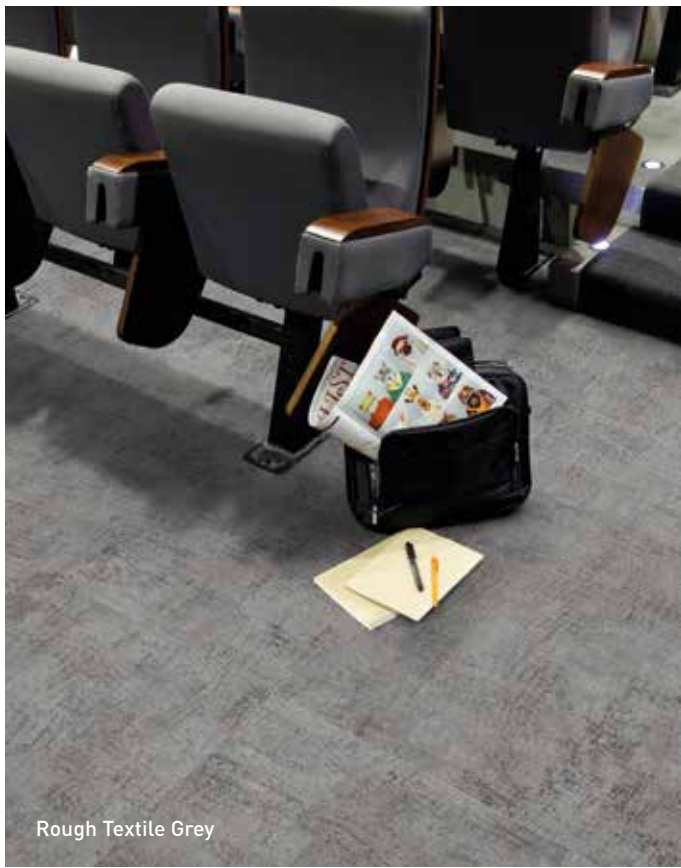
Ref. 5947 S001

### MDF WHITE SKIRTING

- Can be clipped (ref. 5948)
- Nailed or adhesived
- Can be painted over

### PLINTHE MDF BLANCHE

- Peut être clipsée (réf. 5948)
- Peut être clouée ou adhésivée
- Peut être peinte



Rough Textile Grey



Dalma Burgundy



Rough Textile Beige



Gentleman Grey



Dalma Grey

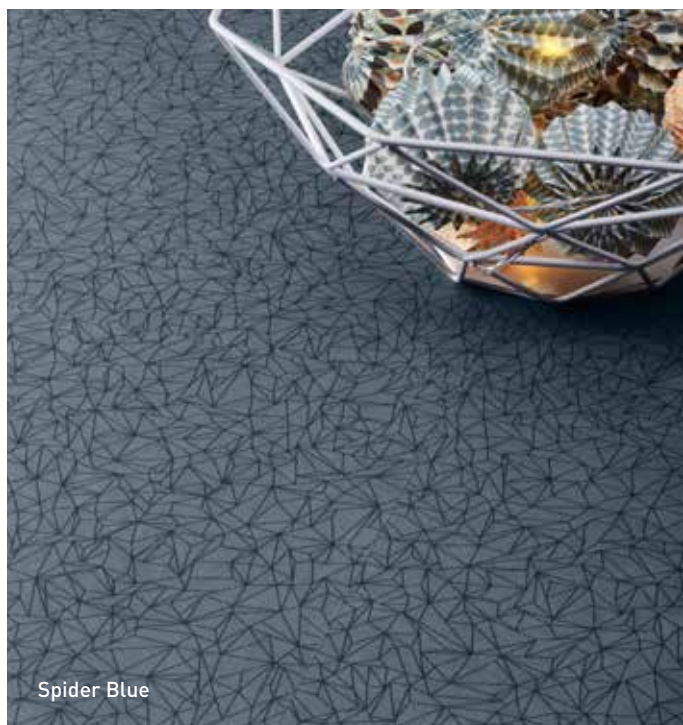


Gentleman Taupe

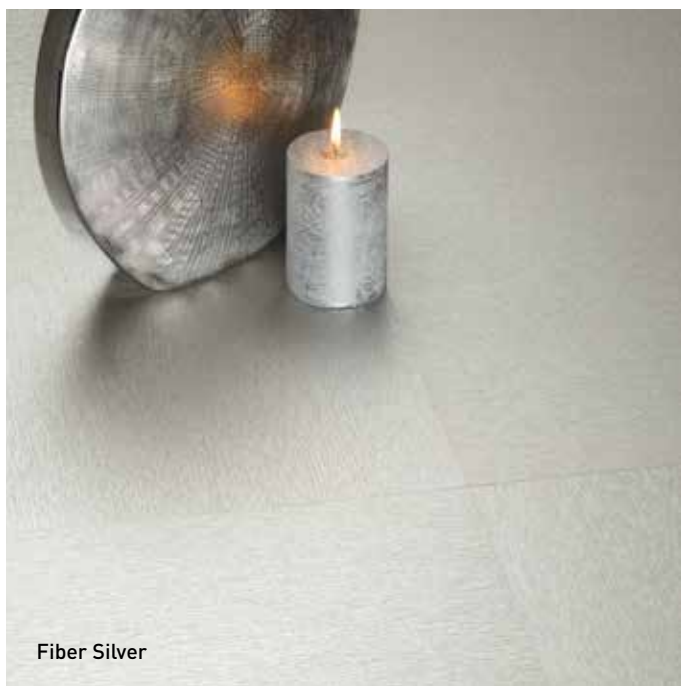




Dock Grey



Spider Blue



Fiber Silver



Barma Sweet



Mozaic Grey



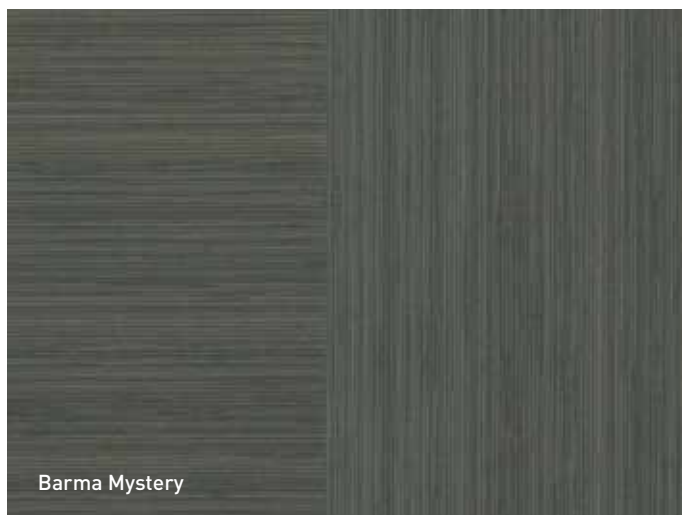




Kadina City



Gentleman Blue



Barma Mystery

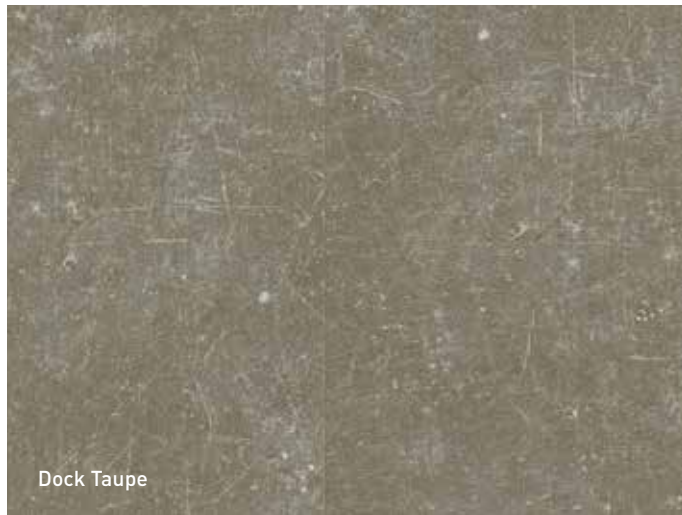


Fiber Heavy Metal





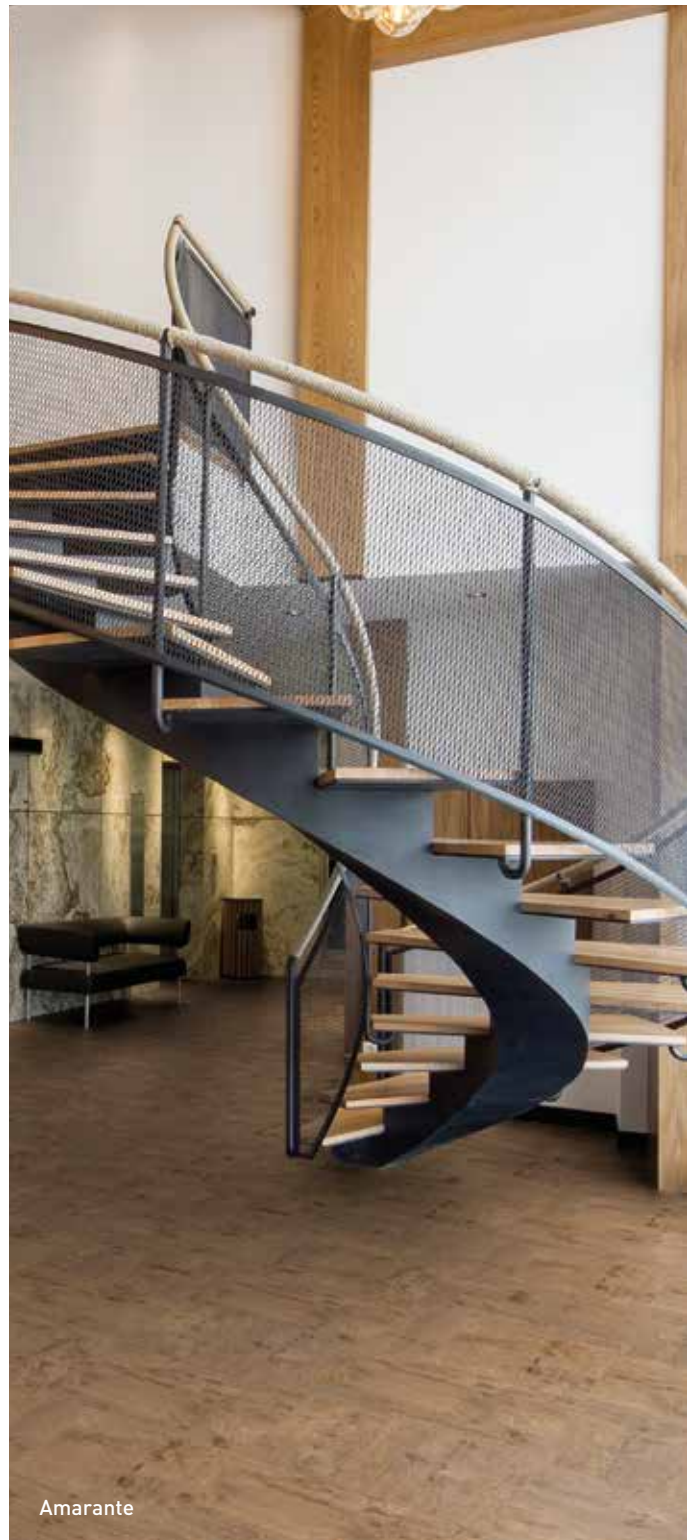
Gentleman Beige



Dock Taupe



Amarante Dark



Amarante

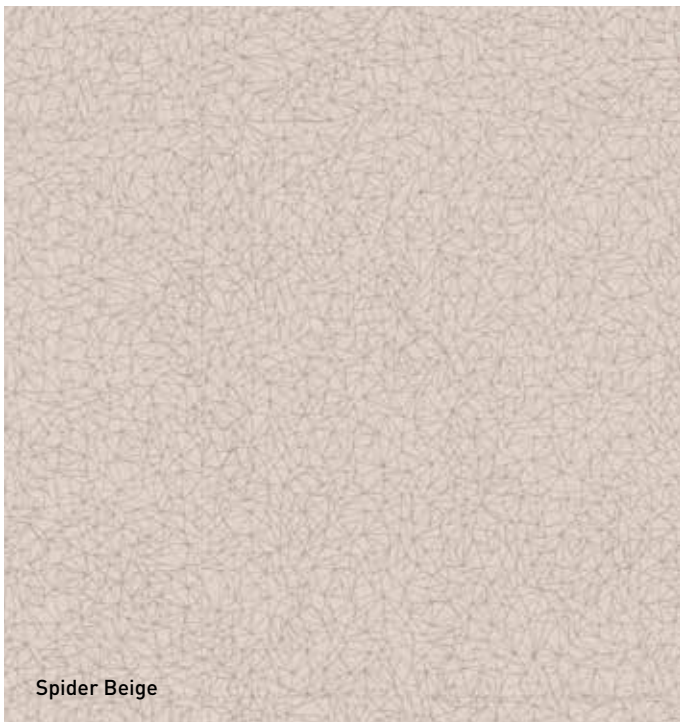




Fiber Copper



Barma Beige



Spider Beige



Albion

# SAGA<sup>2</sup> / SAGA<sup>2</sup> Connect

gerflor.com

\* Information sur le niveau d'émission de substances volatiles dans l'air intérieur, présentant un risque de toxicité par inhalation, sur une échelle de classe allant de A+ (très faibles émissions) à C (fortes émissions)



DESCRIPTION / BESCHREIBUNG / BESCHRIJVING / DESCRIPION / DESCRIPCION / DESCRIZIONE / BESKRIVNING / BESKRIVELSE	SAGA <sup>2</sup>		SAGA <sup>2</sup> Connect	
Total Thickness / Gesamtdicke / Totale dikte / Épaisseur totale / Espesor total / Essessura total / Spessore totale / Total tjocklek / Total tykkelse	EN ISO 24346	mm	4.60	5.00
Thickness of the wearlayer / Dicke der Nuttschicht / Dikte van de slijtlaag / Épaisseur couche d'usure / Espesor capa de uso / Essessura camada de desgaste / Spessore strato di usura / Sliitskiikt tjocklek / Tykkelse sliitesjikt	EN ISO 24340	mm	0.70	0.70
Weight / Flächengewicht / Gewicht / Poids / Peso / Peso / Vikt / Vekt	EN ISO 23997	g/m <sup>2</sup>	5595	8235
Size / Format / Afmetingen / Format / Dimensiones / Dimensões / Dimensioe / Storlek / Størrelse	ISO 24342	mm	500 x 500	701.3 x 701.3
Number of tiles per package / Nombre de dalles par boîte / Cantidad de losetas / Caja	ASTM F 536	inch	19.685" x 19.685"	27.6" x 27.6"
	-	-	10	100
<b>CLASSIFICATION / KLASSIFIKATION / CLASSIFICATIE / CLASSIFICACION / CLASIFICACIONES / CLASSIFICAÇÕES / CLASSIFICAZIONI / KLASSIFICERING / KLASSIFISERING</b>				
Norm/Product Specification / Produktnorm / Technische eigenschappen / Norme/Spécification produit / Normas / Normas / Norma prodotto / Norm/Produktspezifikation / Norm	-	-	EN 652	EN ISO 10582
European Classification / Europäische Klassifizierung / Europese classificatie / Classement européen / Classificación europea / Classificação Europeia / Europea / Europaklass / Europaklasse	ASTM F 1700-04	-	Class III Type B	Class III Type B
	EN ISO 10874	Class	34-42	34 - 43
<b>Classement UPEC</b>	-	-	<b>U4P3E2C2</b>	<b>Pour pose dans des locaux classés U4P3E2C2</b>
<b>Avis technique</b>	-	<b>n°</b>	<b>12/13-1655</b>	-
Room Impact / Sonorité à la marche / Gehrschall	NFS 31 074	dB	< 65	75
Fire Rating / Brandverhalten / Brand classificatie / Classement Feu / Fuego / Fogo / Reazione al fuoco / Brandklassificering / Brannklassifisering	EN 13 501-1	Class	Bfl-s1	Bfl-s1
	ASTM E648-08	Class	1	-
	CAN/ULC S102.2	-	-	-
Static Electrical Propensity / Begehaufladung / Elektrische eigenschappen / Potentiel de charge / Comportamiento electrostático / Comportamento electrostático / Resistenza elettrica / Elektrisk oppladning / Elektrostatisk oppladning	EN 1815	kV	< 2	< 2
Slip Resistance Wet / Rutschhemmung / Anti-slip / Glissance humide / Deslizamiento húmedo / Escorregamento húmido / Scivolosità umida <sup>(1)</sup> / Friktion / Friksjon, våt	DIN 51130/BGR 181	Class	R10 <sup>(2)</sup>	R10
<b>PERFORMANCES / TECHNISCHE EIGENSCHAFTEN / TESTRESULTAAT / PERFORMANCE / CUALIDADES TÉCNICAS / PERFORMANCES / CARATTERISTICHE TECNICHE / TESTVÄRDEN / TESTVERDIER</b>				
Wear Resistance / Verschleißverhalten / Slijtvastheid / Résistance à l'usure / Abrasión / Abrasão / Resistenza all'abrasione / Slitagemotstånd / Slitestykke	EN 660.2	mm <sup>3</sup>	≤ 2.0	≤ 2.0
Wear Group / Verschleißgruppe / Groep slijtvastheid / Groupe d'abrasion / Grupo de abrasión / Grupo de abrasão / Gruppo di abrasione / Slitklass / Slitasje	EN 652	group	T	T
Type Binder content / Teneur en agent liant	ISO 10582	group	-	I
Dimensional Stability / Maßstabilität / Maatvastheid / Stabilité dimensionnelle / Estabilidad dimensional / Estabilidade dimensional / Stabilität dimensionale / Dimensjonsstabilitet / Dimensjonsstabilitet	EN ISO 23999	%	≤ 0.15	≤ 0.15
Residual Indentation / Resteindruck / Indrukbelasting / Poinçonnement statique rémanent / Punzonamiento / Punçoamento / Impronta / Intrycksbeständighet / Intrykksfasthet	EN ISO 24343-1	mm	< 0.13	≤ 0.10
Castor chair test / Stuhllrollenbeanspruchung / Rolweerstand bureaustoelen / Essai de la chaise à roulettes / Determinación del efecto de una silla con ruedas / Resistência a cadeiras de rodas / Resistenza al passaggio di sed / Tålighet mot rullande stolshjul / Rullende stolhjul (Type W)	ISO 4918	-	OK	OK
Impact sound insulation / Trittschallverbesserungsmaß / Geluidsisolatie / Isolation acoustique bruits de chocs / Acústica / Isolamento acústico / Stegljudsdämpning / Trinnylidsdemping	EN ISO 717-2	dB	15	5
Impact insulation class (IIC)	ASTM E492	dB	IIC - 58dB	-
Thermal Conductivity / Wärmeleitfähigkeit / Thermische weerstand / Conductivité thermique / Conductividad térmica / Contutividade térmica / Resistenza termica / Värmeledningsmotstånd / Varmemotstand	EN ISO 10456	W/(m.K)	0.25	0.25
Colour Fastness / Lichtechtheit / Lichtechtheit / Solidité lumière / Resistencia a la luz / Estabilidade das cores / Solidità alla luce / Färgbeständighet / Fargebestandighet	EN 20 105 - B02	degree	≥ 6	≥ 6
Surface Treatment / Oberflächenvergütung / Oppervlaktebehandling / Traitement de surface / Tratamiento de superficie / Tratamento de superficie / Trattamento di superficie / Ytbehandling / Overflatebehandling	-	-	Protocolsol <sup>®</sup>	Protocolsol <sup>®</sup>
Chemical Products Resistance / Verhalten gegenüber Chemikalien / Chemische bestandigheid / Résistance aux produits chimiques / Resistencia a los productos químicos / Resistência aos produtos químicos / Resistenza ai prodotti chimici / Kemikaliebestandighet / Kjemikaliebestandighet	EN ISO 26987	-	OK / Beständig gegenüber nicht färbenden alkoholhaltigen Handdesinfektionsmitteln, Haushaltschemikalien und verdünnten Säuren und Laugen bei kurzzeitiger Einwirkung	OK
<b>ENVIRONMENT/INDOOR AIR QUALITY / UMWELT/RAUMLUFTQUALITÄT / ENVIRONNEMENT/QUALITE DE L'AIR INTERIEUR / MEDIO AMBIENTE/CALIDAD INTERIOR DEL AIRE INTERIOR / MEIO AMBIENTE/ QUALIDADE DO AR INTERIOR / INNOMHUSLUFT / EMISJONER</b>				
TVOC after 28 days / TVOC (28 Tage) / TVOC (28 dagen) / TVOC après 28 jours / TVOC (28 dias) / TVOC (28 dias) / TVOC (28 giorni) / TVOC (28 dagar) / TVOC (28 dager)	ISO 16000-6	µg/m <sup>3</sup>	< 10	< 10
Certification / Zertifikat / Certification / Certificado / Certificação / Certifikat / Sertifisering	-	-	Floorscore <sup>®</sup>	-
<b>CE MARKING / CE KENNZEICHNUNG / EG_CONFORMITEITSMERK / MARQUAGE CE / MARCA DE CONFORMIDAD CE / MARCA DE CONFORMIDADE CE / MARCATURA CE DI CONFORMITA / CE-MÄRKNING / CE MARKING</b>				
	EN 14041	-		

(1) Ramp test with oil / Schiefe Ebene / Plan incliné avec huile

(2) Glissance humide / Slip resistance wer / Rutschhemmung : details sur site gerflor.com / details on website gerflor.com / Einzelheiten auf der web-site gerflor.com

## SAGA<sup>2</sup>: LESS SPEAKING FOR MORE ACTIONS

<p><b>COMPOSITION</b> 100% REACH Cork Backing (SAGA<sup>2</sup> only)</p>	<p><b>INDOOR AIR QUALITY</b> 10 times better than norms requirements (TVOC &lt; 100 µg/m<sup>3</sup> after 28 days) No formaldehyde emission</p>	<p><b>RECYCLED CONTENT</b> 55%</p>	<p><b>RECYCLABILITY</b> 100%</p>	<p><b>LIFE CYCLE ANALYSIS</b> Eco-designed according to a product specific Life Cycle Analysis</p>	<p><b>WELNESS</b> SAGA<sup>2</sup> only Comfort : Walking comfort &lt;65dB (best certification) Impact noise reduction -15 dB</p>
---	--	--	--------------------------------------	--	---

**IMPORTANT:** The information contained in this document is valid from 01/06/2019 and is subject to change at any time without notice. In the context of constantly changing technology, our customers are responsible, prior to any use, for checking with us that this document is the version in force.

**IMPORTANT :** Les informations contenues dans ce document sont valables à compter du : 01/06/2019 et susceptibles d'être modifiées à tout moment et sans préavis. L'évolution de la technique étant permanente, il appartient à notre clientèle avant toute mise en œuvre, de vérifier auprès de nos services que le présent document est bien celui en vigueur.

FRANCE: Gerflor Service Express

0 810 569 569 0 810 569 570

e-mail: contactfrance@gerflor.com

OTHER COUNTRIES: Gerflor International

Tel: +33 (0)4 74 05 40 00 - Fax: +33 (0)4 74 05 03 13

e-mail: gerflorcontract@gerflor.com

**Gerflor**  
theflooringgroup